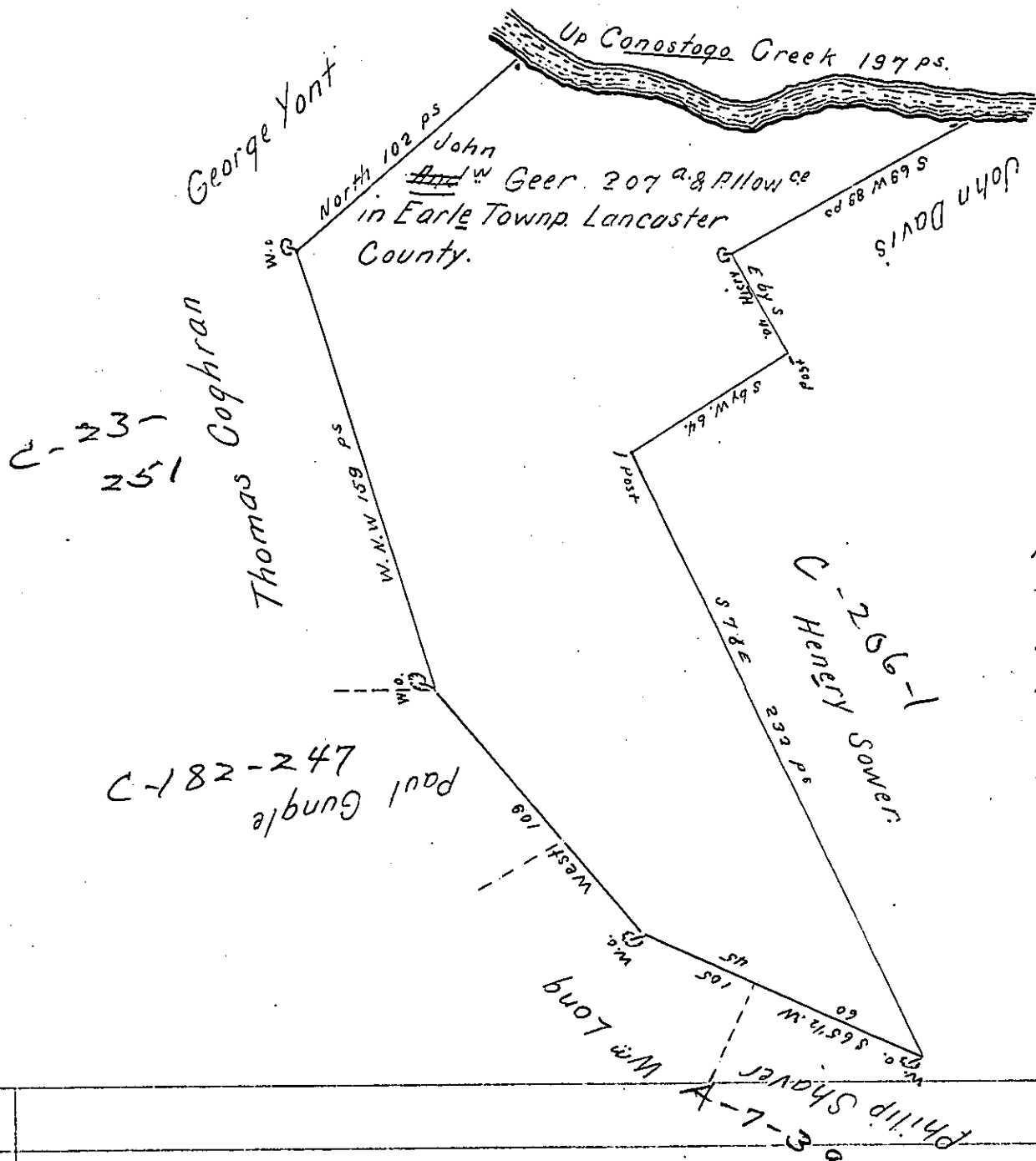


C-105-255



N.B. this Land was first granted to John Geer by Warrant of the Second of May 1749 & by him conveyed to Andrew Geer.

A Draught of ~~Andrew~~ John Geer's land Situate in Earle Township in the County of Lancaster. Containing Two Hundred & Seven Acres & the Allowance of Six Acres p. Cent. for Roads and Highways. By Virtue of the Honourable the Proprietors Warrant Dated the ~~Eight day of January 1751~~ ^{Second of May 1749.} Survey'd the 4th of January 1752.

To Nicholas Scull Esqr. } By Tho. Cookson
Surveyor General } D.S.

IN TESTIMONY that the above is a copy of the original remaining on file in the Department of Internal Affairs of Pennsylvania, made conformably to an Act of Assembly approved the 16th day of February, 1833, I have hereunto set my Hand and caused the Seal of said Department to be affixed at Harrisburg, this seventh day of October 1904

Grace R. Pearson
Secretary of Internal Affairs.